

**Notes**

1. The areas shown on this map are indicative of the extent of erosion and permanent inundation defined by erosion prone area plans declared under the *Coastal Protection and Management Act 1995*. Only the declared erosion prone area plans should be used for development assessment. To determine the actual position of the erosion prone area a registered surveyor or geotechnical consultant may be required if there is any doubt.

2. Erosion prone area plans for each local government area and a comprehensive description of their determination are available from the Department of Environment and Heritage Protection website at [www.ehp.qld.gov.au](http://www.ehp.qld.gov.au)

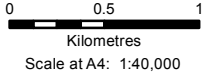
**Disclaimer**

Whilst every care is taken to ensure the accuracy of this product, the Department of Environment and Heritage Protection makes no representations or warranties about its accuracy, reliability, completeness or suitability for any particular purpose and disclaims all responsibility and all liability (including without limitation, liability in negligence) for all expenses, losses, damages (including indirect or consequential damage) and costs which you may incur as a result of the product being inaccurate or incomplete in any way and for any reason. This map is intended to be printed on an A4 page.

© The State of Queensland 2016



**Queensland Government**



**Coastal Hazard Areas Map  
Erosion Prone Area**

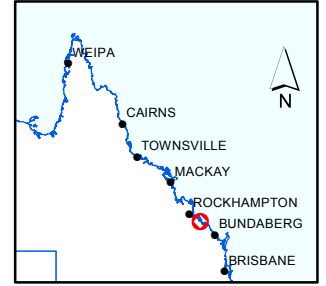
Version 6 - October 2016  
9150-234 TONDOON

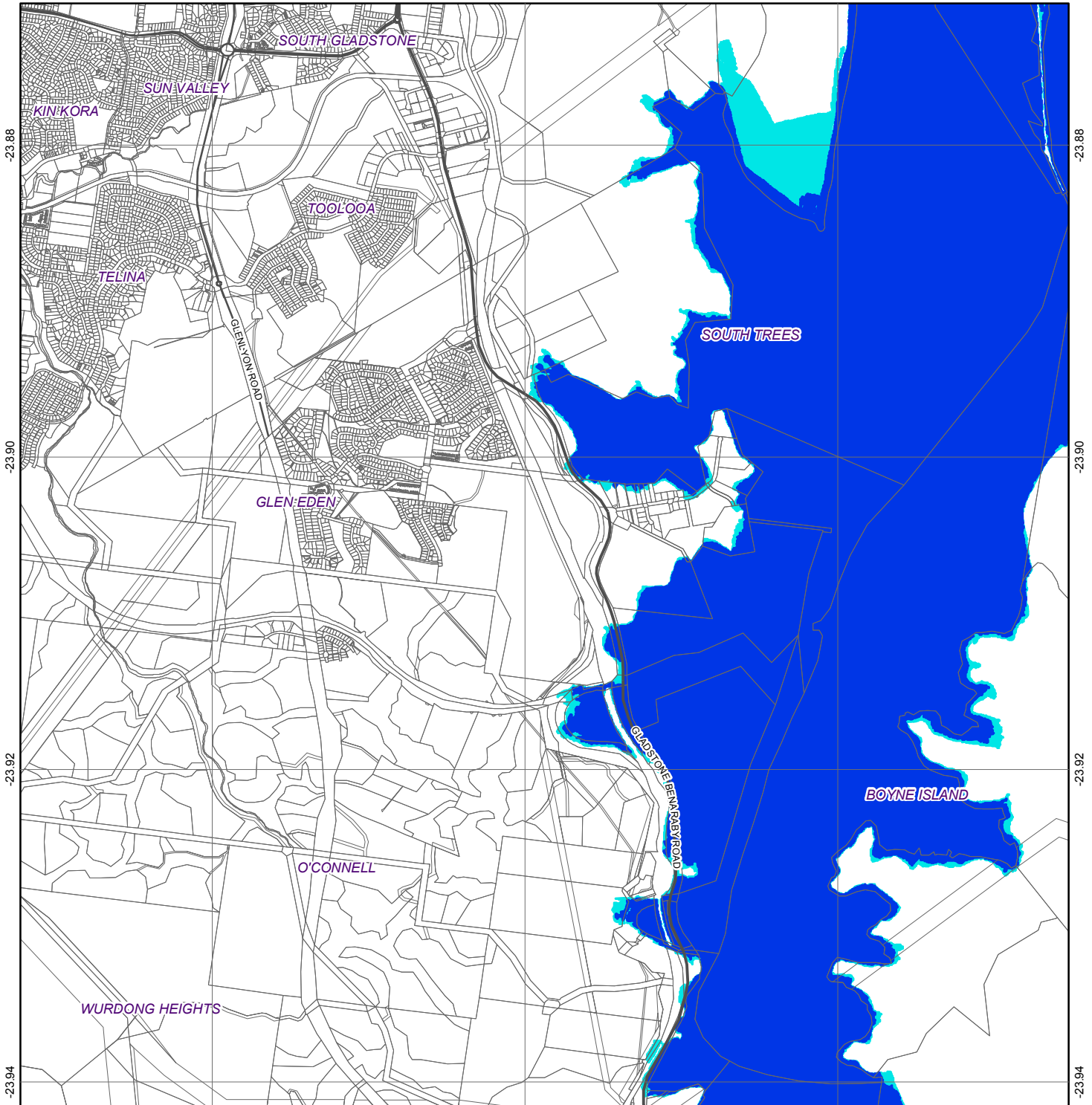
**Indicative Erosion Prone Area footprint  
(including projected climate change impacts\*)**

- Erosion due to storm impact and long term trends of sediment loss and channel migration.
- Erosion and permanent tidal inundation due to sea level rise.

\*Sea level rise of 0.8m at 2100

9150-312 CALLEMONDRAH	9150-243 GLADSTONE	9150-242 MANNING REEF
9150-321 BEECHER	9150-234 TONDOON	9150-231 BOYNE ISLAND
	9150-233 PHRYNE	9150-232 BOYNE RIVER





**Notes**

1. A default storm tide inundation level of 1.5 m HAT in South East Queensland regional planning area and 2.0 m HAT for the remainder of Queensland is used where projected storm tide inundation levels have not been determined locally. The default level uses a sea level rise factor of 0.8m to 2100.

2. The high hazard area may be also subject to permanent inundation by sea level rise - refer to the Erosion Prone Area map.

3. The map should be used as a guide only. Field surveys are recommended to verify feature boundaries.

**Disclaimer**

Whilst every care is taken to ensure the accuracy of this product, the Department of Environment and Heritage Protection makes no representations or warranties about its accuracy, reliability, completeness or suitability for any particular purpose and disclaims all responsibility and all liability (including without limitation, liability in negligence) for all expenses, losses, damages (including indirect or consequential damage) and costs which you may incur as a result of the product being inaccurate or incomplete in any way and for any reason. This map is intended to be printed on an A4 page.


© The State of Queensland 2015


## Coastal Hazard Areas Map Storm Tide Inundation Areas


Version 4 - July 2015

9150-234 TONDOON

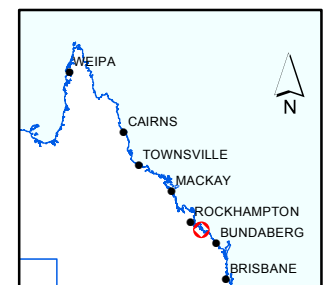
### Storm Tide Inundation Area (including projected climate change impacts to 2100)

 High hazard area (greater than 1.0 m water depth)

 Medium hazard area (less than 1.0 m water depth)

 Coastal hazard data not available in this area. Refer to notes 1 and 2 to determine.

9150-312 CALLEMONDAH	9150-243 GLADSTONE	9150-242 MANNING REEF
9150-321 BEECHER	9150-234 TONDOON	9150-231 BOYNE ISLAND
	9150-233 PHRYNE	9150-232 BOYNE RIVER



**Queensland  
Government**

